



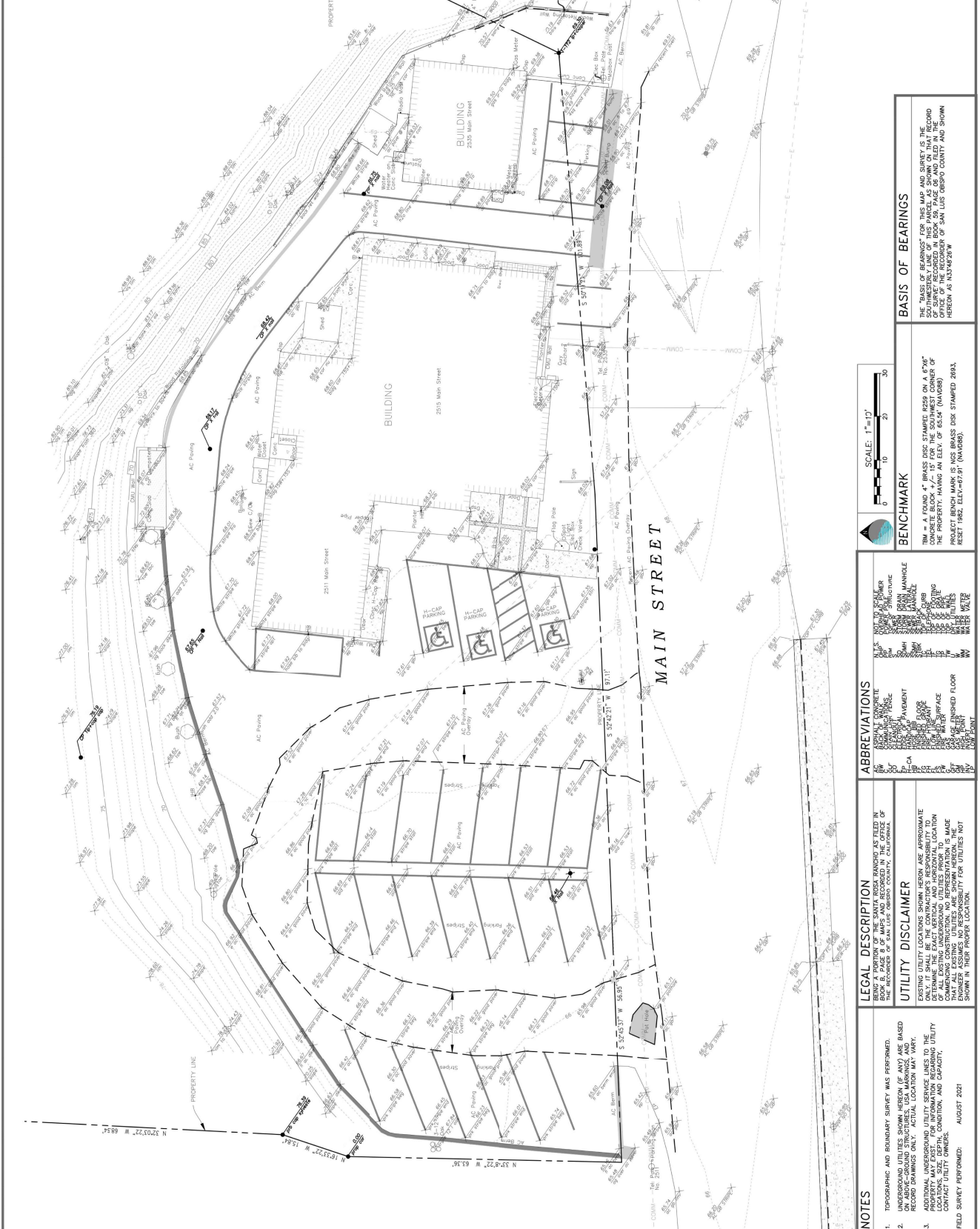
COAST
ENGINEERING
& SURVEY, INC.
11110 CALIFORNIA BLVD. SUITE 100
SAN DIEGO, CA 92121
PH: (619) 499-1928



PROJECT NO.	215 MAIN STREET
DATE	015-241-024
DRWN	
CHECKED	
DATE	
DESCRIPTION	
REVISIONS	

215 MAIN STREET
CAMBRIA, CA
PROJECT NO. 015-241-024
DW
1/27/25
C.H.C. DISTRICT
DATE: AUG. 27, 2021
SHEET: 1

CAMBRIA COMMUNITY HEALTH



SCALE: 1"=12'



BENCHMARK

TBM = A FOUND 4" BRASS DISC STAMPED R299 ON A 6"x6" CONCRETE BLOCK. M.A.C. IS FOR THE SOUTHWEST CORNER OF THE BUILDING. M.A.C. IS FOR THE SOUTHWEST CORNER OF THE PROJECT. BENCH MARK IS (NCS BRASS DISC STAMPED 2893, RESET 1882, ELEV=67.91 (NAVD89).

BASIS OF BEARINGS

THE TRUST OF BEARINGS FOR THIS MAP AND SURVEY IS THE BASIS OF SURVEY RECORDED IN BOOK 58 PAGE 86 AND FILED IN THE OFFICE OF THE COUNTY CLERK OF SAN LUIS OBISPO COUNTY AND SHOWN HEREON AS U343623W.

ABBREVIATIONS

CON	CONCRETE
ASPH	ASPHALT
GRAVEL	GRAVEL
DIRT	DIRT
WOOD	WOOD
IRON	IRON
STEEL	STEEL
BRASS	BRASS
ALUMINUM	ALUMINUM
COPPER	COPPER
ZINC	ZINC
LEAD	LEAD
GLASS	GLASS
PAPER	PAPER
PLASTIC	PLASTIC
TEXTILE	TEXTILE
OTHER	OTHER

LEGAL DESCRIPTION

BEING A PORTION OF THE SANTA ROSA RANCHO AS FILED IN THE RECORDS OF SAN LUIS OBISPO COUNTY, CALIFORNIA.

UTILITY DISCLAIMER

EXISTING UTILITY LOCATIONS SHOWN HEREON ARE APPROXIMATE AND BASED ON RECORD DRAWINGS ONLY. ACTUAL LOCATION MAY VARY. ADDITIONAL UNDERGROUND UTILITY SERVICE LINES TO THE PROPERTY MAY EXIST. FOR INFORMATION REGARDING UTILITY LOCATIONS, CONTACT UTILITY OWNERS. ENGINEER ASSUMES NO RESPONSIBILITY FOR UTILITIES NOT SHOWN IN THEIR PROPER LOCATION.

NOTES

1. TOPOGRAPHIC AND BOUNDARY SURVEY WAS PERFORMED.
 2. UNDERGROUND UTILITIES SHOWN HEREON (IF ANY) ARE BASED ON RECORD DRAWINGS ONLY. ACTUAL LOCATION MAY VARY.
 3. ADDITIONAL UNDERGROUND UTILITY SERVICE LINES TO THE PROPERTY MAY EXIST. FOR INFORMATION REGARDING UTILITY LOCATIONS, CONTACT UTILITY OWNERS.
- FIELD SURVEY PERFORMED: AUGUST 2021



2835 Main Street
 Cambria, CA 93428
 (805) 827-8304
 www.cambriahealthcare.org

CCHD BOARD MEMBERS
 Chair: Marko
 President: Dave Mohr
 Director 1: Bill Blythe
 Director 2: Timothy Barnes
 Director 3: Simone Ralston
 Director 4: [blank]
 Director 5: [blank]

NEW IUCS STATION BUILDING COMMITTEE
 Chair: [blank]
 Member: [blank]
 Member: [blank]
 Member: [blank]
 Member: [blank]
 Member: [blank]
 Secretary: [blank]

CONSULTANT
 Gary Moyer, Architect
 C-16838

1118 Morse Court
 Santa Rosa, CA 95404
 (707) 528-6010
 garmoyer118@gmail.com

PROJECT
 Proposed New Ambulance Station
 2435 Main Street
 Cambria, CA 93428

Preliminary Site Plan

REV:01 09.18.2022
 ISSUE 06.20.2022

A-01

SITE PLAN
 Scale: 1/10" = 1'-0"



NOTES

REVISE



2635 Main Street
 Concord, CA 94528
 (925) 827-8304
 www.contracostahealthcare.org

CCHD BOARD MEMBERS

Cheryl Morabito, President
 Dennis Kohnert, Vice President
 Bill Blum, Director #1
 Timothy Boyles, Chief Director
 Simone Ralston, Director #2

AMBIANCE STATION BUILDING COMMITTEE

James Miller, Chair
 Igor Fedoroff, Member
 Anthony Sauer, Member
 Donald Sauer, Public Member
 Steve Ralston, Secretary

CONSULTANT

Gary Moyer, Architect
 C-16838

1118 Monroe Court
 San Ramon, CA 94504
 (707) 528-6010
 garmoyer1118@gmail.com

PROJECT

Proposed New
 Ambulance Station
 2435 Main Street
 Cambria, CA 93428

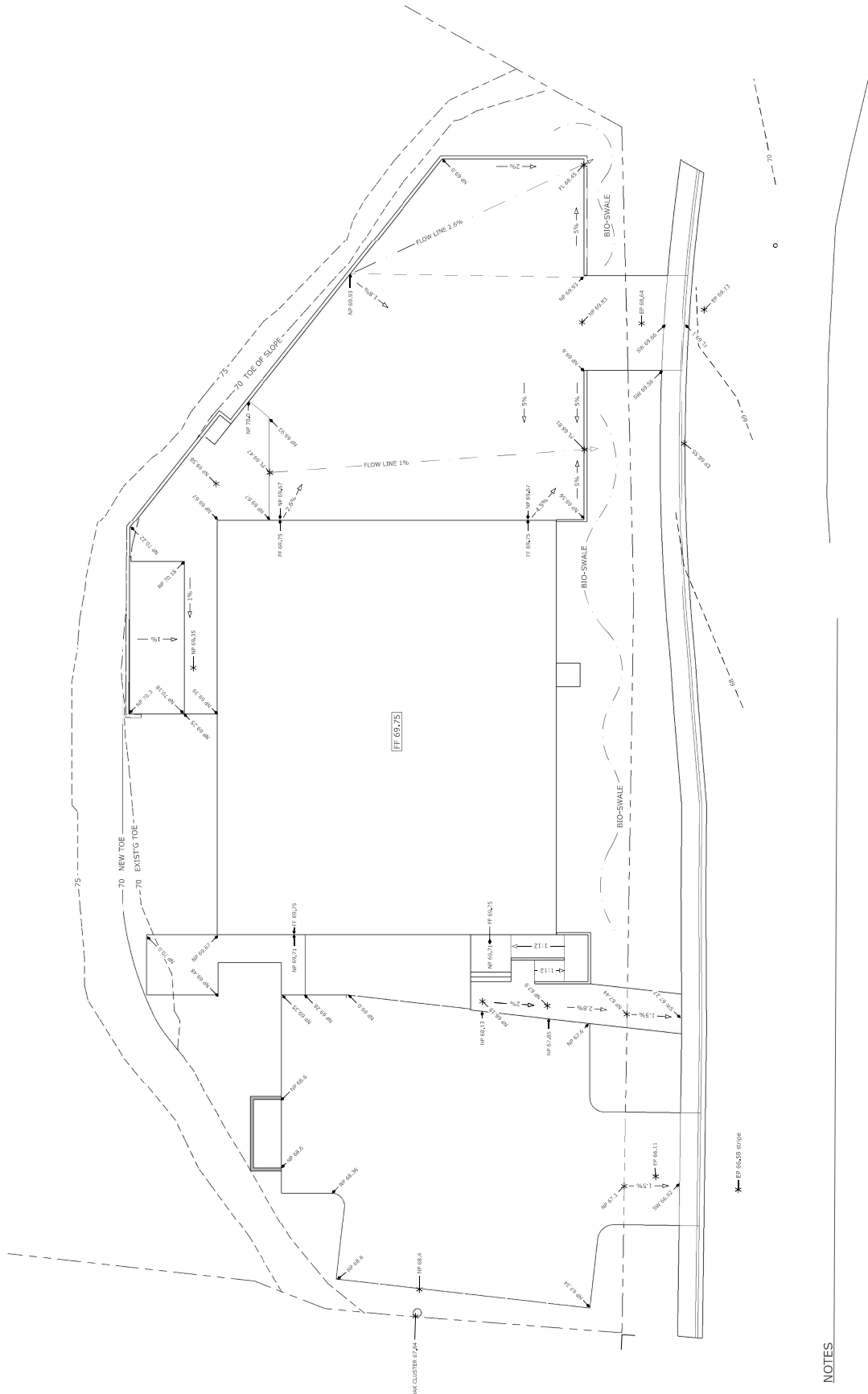


DRAINAGE STUDY

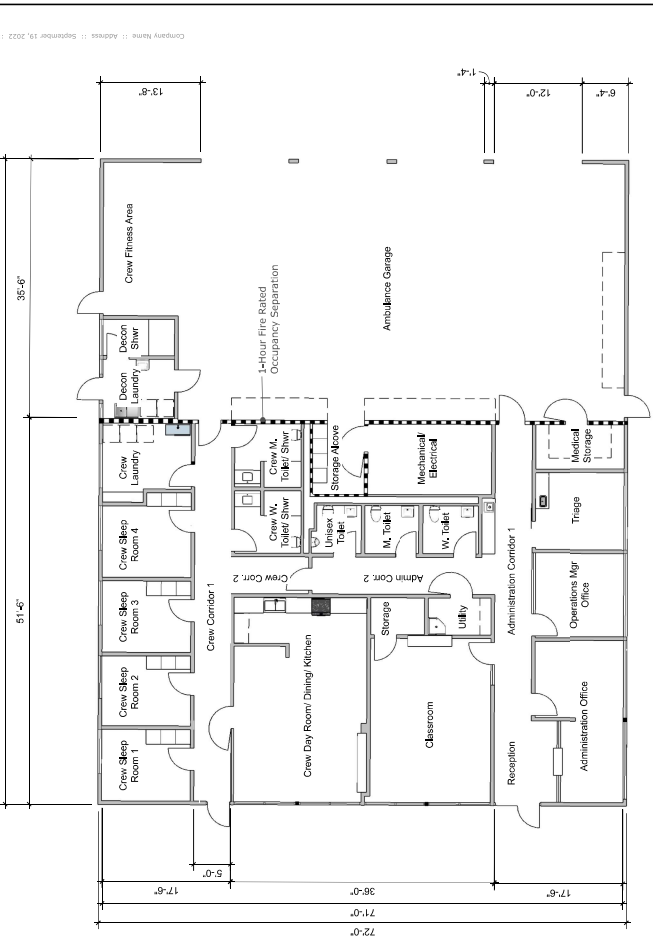
Scale: 1/10" = 1'-0"

REV:01 09/18/2022
 ISSUE 06/20/2022

A-0



NOTES



FLOOR PLAN
 Scale: 1/8" = 1'-0"

- NOTES:**
- Referenced Codes: California Building Code (CBC), 2019 edition California Fire Code (CFC), 2019 edition California Fire Code (CFC), 2019 edition
 - Building gross square footage, measured from inside of exterior walls = 6,177 sq-ft
 - Construction Type - per CBC Table 506.2: Meets requirements for Type I-A-B
 - Fire Sprinklers: Building provided throughout with fully automatic fire sprinkler system per CBC Table 503.3.6
 - Occupancy Separation: per CBC Table 508.4: One-hour occupancy separation required between Groups R2 and S2.
 - Corridors: All Corridors 5'-0" wide and meet requirements for non-fire-rated corridor construction.
 - All fire-rated doors are minimum 3'-0" wide.

Function	Group	Area (sq ft)	Remarks
Crew Sleep Rooms 1, 2, 3	R2	116	All rooms/ areas fully ADA accessible except as noted below
Crew Sleep Room 4	R2	116	Partially accessible - approach, entry, and exit
Crew Laundry	R2	117	Partially accessible - approach, entry, and exit
Crew Corridor 1	R2	258	> 100 sq. ft. fire protection meets CBC Table 509 requirements
Crew Corridor 2	R2	53	5'-0" wide, non-fire-rated corridor construction
Crew Women's Toilet/ Shower	R2	76	5'-0" wide, non-fire-rated corridor construction
Crew Men's Toilet/ Shower	R2	502	Install grab bar and shower seat blocking only
Crew Day Room/ Dining/ Kitchen	R2	502	Kitchen counter @ 36" high, sink ADA adaptable, meta ref. includes cabinets and fixtures
Administration Office	B	233	
Operations Mgr Office	B	130	Counter, cabinets, sink, not accessible - exempt
Reception	B	94	120 Counter, cabinets, sink, not accessible - exempt
Administration Corridor 1	B	125	5'-0" wide, non-fire-rated corridor construction
Administration Corridor 2	B	369	Assigned to seat 12: (16) tables, (13) chairs
Classroom Storage	B	40	Partially accessible - approach, entry, and exit
Utility Storage	B	49	Seal to minimum ADA clearances
Women's Single Occupant Toilet	B	41	Seal to minimum ADA clearances
Men's Single Occupant Toilet	B	41	Not accessible
Classroom Storage	B	2729	
Mechanical/ Electrical	B	164	Not accessible - exempt
Storage Above	B	68	
Crew Fitness Area	S2	211	Open to Garage, function accessory to R3
Decontamination Laundry	B	77	
Decontamination Shower	B	48	

Occupant Load per CBC Table 4-3

Room/Group	Area	Load	Remarks
Business (B)	1300	12	6
Classroom (B)	2182	0	0
Classroom (B)	30	509	12
Classroom (B)	50	297	4
Classroom (B)	24	12	12
Total Load - Group B			6
Total Load - Group R2			6
Total Load - Group S2			6

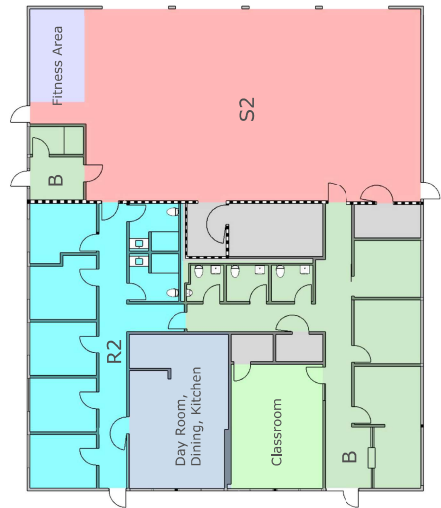
Required Fixtures per CBC Table 4-2.1

Room/Group	Area	Fixtures	Remarks
Female (F)	1100	1	1
Male (M)	1100	1	1
Female (F)	115	2	1
Male (M)	115	1	1
Female (F)	115	1	1
Male (M)	115	1	1
Female (F)	118	1	1
Male (M)	118	1	1
Total Required			2
Total Provided			2

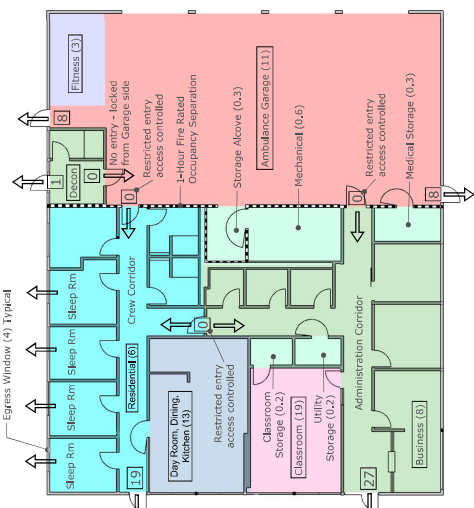
Occupant Load per CBC Table 1004.5

Room/Group	Area	Load	Remarks
Administration	1168 sq ft	16	Includes (2) offices, (1) reception desk, (1) storage room, (1) utility room, (1) rest room, (1) janitor closet
Classroom	369 sq ft	3	See note 2B, one exit required
Classroom Storage	48 sq ft	0.2	See note 2B, one exit required
Utility Storage	54 sq ft	0.2	See note 2B, one exit required
TOTAL GROUP (R2)	1639 sq ft	16	
Administration Corridor	1188 sq ft	35	Includes (1) crew sleep room, (2) restrooms, (1) day room, (1) utility room, (1) storage room, (1) decontamination laundry, (1) decontamination shower, (1) ambulance garage
Residential	1188 sq ft	19	See note 2B, one exit required
Day Room	502 sq ft	13	See note 2B, one exit required
TOTAL RESIDENTIAL (R2)	1684 sq ft	19	
Decontamination (B)	143 sq ft	1	See note 2B, one exit required
Decontamination Shower	677 sq ft	1	See note 2B, one exit required

- EGRESS NOTES:**
- Administration and Crew corridors are separated by an access controlled door (located in the Crew Corridor) and an emergency exit into the Administration Corridor (B) into the Crew Corridor (R2). Free passage from the R2 into the B.
 - Garage exiting through two exterior side-angled doors. No exiting from the R2 into the B.
 - Free passage from Crew and Administration Corridors into Garage. No entry from Garage into the Decontamination Laundry - door locked from inside of the Decontamination Laundry. Free passage from Day Room, Dining, Kitchen, Crew Laundry, and Fitness Area serves six crew members per shift, four full-time, two part-time.
 - Day Room and Dining assigned to seat 12 occupants.
 - Classroom Storage (B) subject to (13) chairs.
 - Garage designed to park four ambulances.



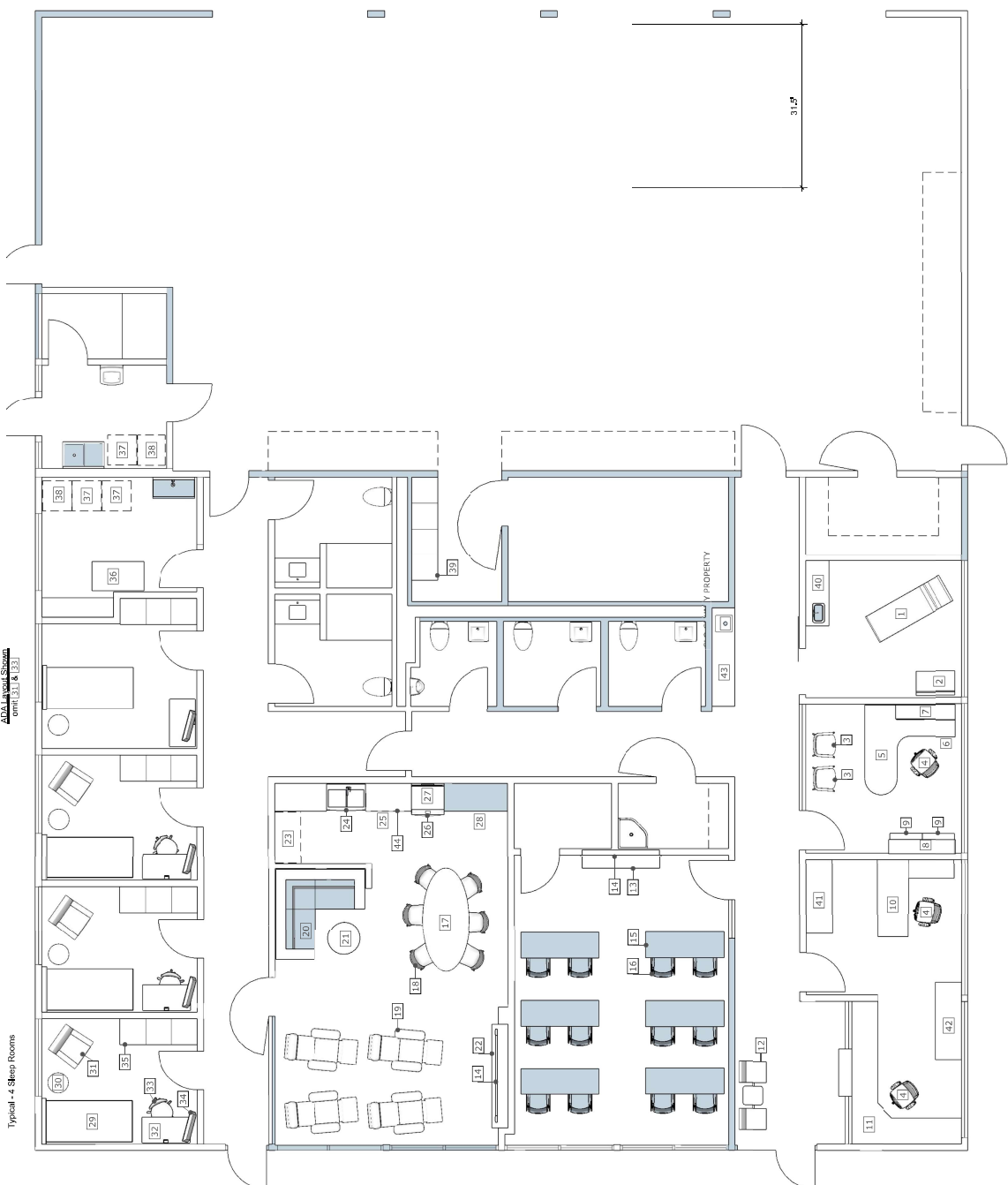
PLUMBING FIXTURES ANALYSIS
 Scale: 3/32" = 1'-0"



EGRESS PLAN
 Scale: 3/32" = 1'-0"

Furniture, Fixtures, & Equipment Schedule

ID	Item	Qty	Specification
1	Exam Table	1	Cabinet type adjustable to full chair position
2	Stretcher Chair	1	
3	Task Chair	3	Crosshatch by Herman Miller shown for reference only
4	Task Chair	1	84" x 84" x 30" w/ work surface
5	Pennant Desk	1	
6	Office Chair (Not Shown)	1	54" x 15 1/4" x 18" 2-compartment w/ flipper covers
7	Office Chair (Not Shown)	1	
8	Bookcases	2	Haworth Sensei LLPD shown for reference only
9	Lateral File 3-Drawer	1	30" X 22" desk, 18" X 12" return
10	Desk Custom Bullfinch	1	
11	Reception Seating	1	Compo 200 Group by Liven shown for reference only
12	Credenza Custom Bullfinch	1	
13	Reception Chair	1	Upholstered
14	Reception Chair	6	24" X 22" flip top or table
15	Training Table	1	
16	Stacking Chair	12	Verni SCH-22-GS by Haworth shown for reference only
17	Dining Table	1	43" x 65" Sullivan by Modcraft shown for reference only
18	Reception Chair	1	Sharon by Ecolab shown for reference only
19	Reclining Chair	4	
20	Corner Sofa Custom Bullfinch	1	19" dia, Alight by Steelbase shown for reference only
21	Office Table Custom Bullfinch	1	
22	Refrigerator 48" Bullfinch	1	19" dia, Mulberry by Modcraft shown for reference only
23	Refrigerator 48" Bullfinch	4	Lenny Club by Steelbase shown for reference only
24	Apron Sink Double Bowl	4	24" x 46" electric height adjustable
25	Refrigerator 48" Bullfinch	4	24" x 46" electric height adjustable
26	Recliner Chair (Not Shown)	4	19" dia, Alight by Steelbase shown for reference only
27	Range Hood (Not Shown)	1	4 Wall mounted 18" wide
28	Range Hood (Not Shown)	1	Normal 24" w/ 24" X 32" X 21" digital combo lock
29	Range Hood (Not Shown)	1	27" w/ 24" X 32" h
30	Refrigerator 48" Bullfinch	2	Electric or heat pump
31	Easy Chair	1	nominal 24" w/ 24" X 32" X 21" digital combo lock
32	Desk Chair	1	
33	Desk Chair	1	
34	TV 32" Class	1	
35	Lockers (3) Custom Bullfinch	1	
36	Locker (1) Custom Bullfinch	1	
37	Locker (1) Custom Bullfinch	1	
38	Dryer	1	
39	Washing Machine	1	
40	Washing Machine	1	
41	Mail Center Casework	1	
42	Copier Files Casework	1	
43	Refresh Center Casework	1	
44	Refresh Counter & Cabinets	1	



FURNITURE, FIXTURES, & EQUIPMENT PLAN
 Scale: 1/4" = 1'-0"