

# CAMBRIA COMMUNITY HEALTHCARE DISTRICT



## Ambulance Station Replacement

To Meet Our Community's Emergency Medical Needs  
*Now and Into the Future*

[www.cambria-healthcare.org](http://www.cambria-healthcare.org)



Slide 3

- **Model A**
- **Phase I**

Before the start of Phase I Construction:  
Relocate all Administration and Crew functions  
into the original building.

Slide 4

- **Model A**
- **Preliminary Plan**

The interior footprint will be designed with  
the input of CCHD Crew Members

Slide 5

- **Design Build Conceptual  
Project Schedule**





**COAST**  
ENGINEERING  
& SURVEY, INC.  
1110 CALIFORNIA BLVD.  
SAN LUIS OBISPO, CA 93401  
PH: 805-438-1820



REVISIONS:	DATE:	DESCRIPTION:

LOCATION	201 MAIN STREET	APN(S)	013-241-024
PROJECT NO.	17075	CLIENT	C.C.H.C. DISTRICT
DRAWN	DW	CHECKED	DB

**CAMBRIA COMMUNITY HEALTH**  
TOPOGRAPHIC MAP AND SITE SURVEY

SHEET:	OF:
1	1
DATE:	AUG. 27, 2021



# Model A PHASE 1 AREA

1" = 40' LOW POINT



2535 Main Street  
Cambria, CA 93428  
(805) 927-8304  
www.cambria-healthcare.org

**CCHD BOARD MEMBERS**

Cecilia Montalvo	President
Igor Fedoroff	Vice President
Diane Kuttat	Secretary
Bill Rice	Director 1
Laure Mlleur	Director 2
Timothy Barnes	Ops Director
Simone Rathbun	Office Mgr

**AMBULANCE STATION BUILDING COMMITTEE**

Laure Mlleur	Chair
Igor Fedoroff	Member
Timothy Barnes	Member
Donald Sather	Public Member
Simone Rathbun	Secretary

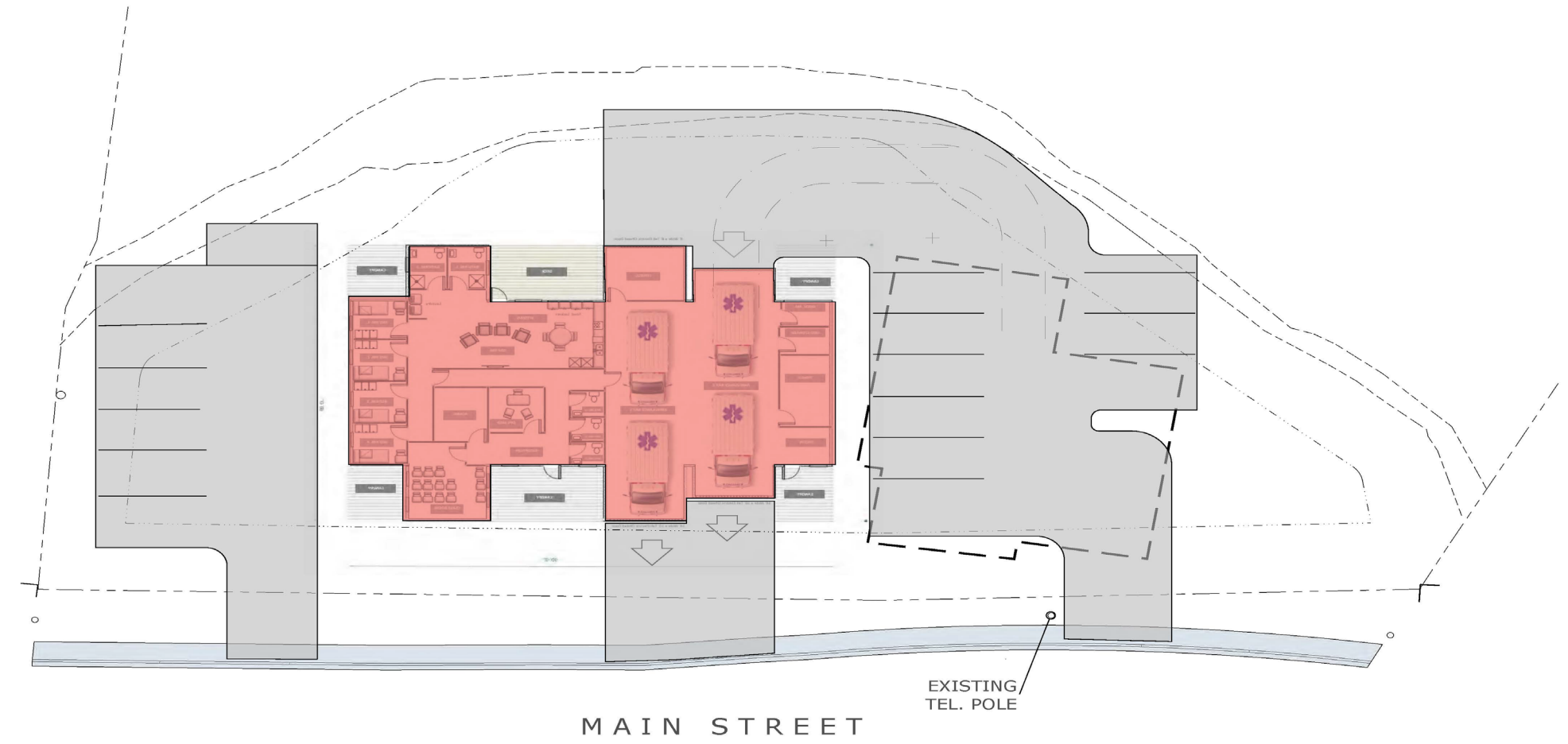
**CONSULTANT**

Gary Moyer, Architect  
C-16838

1118 Monroe Court  
Santa Rosa, CA 95404  
(707) 529-6010  
garymoyer1118@gmail.com

**PROJECT**

Proposed New Ambulance Station  
2435 Main Street  
Cambria, CA 93428

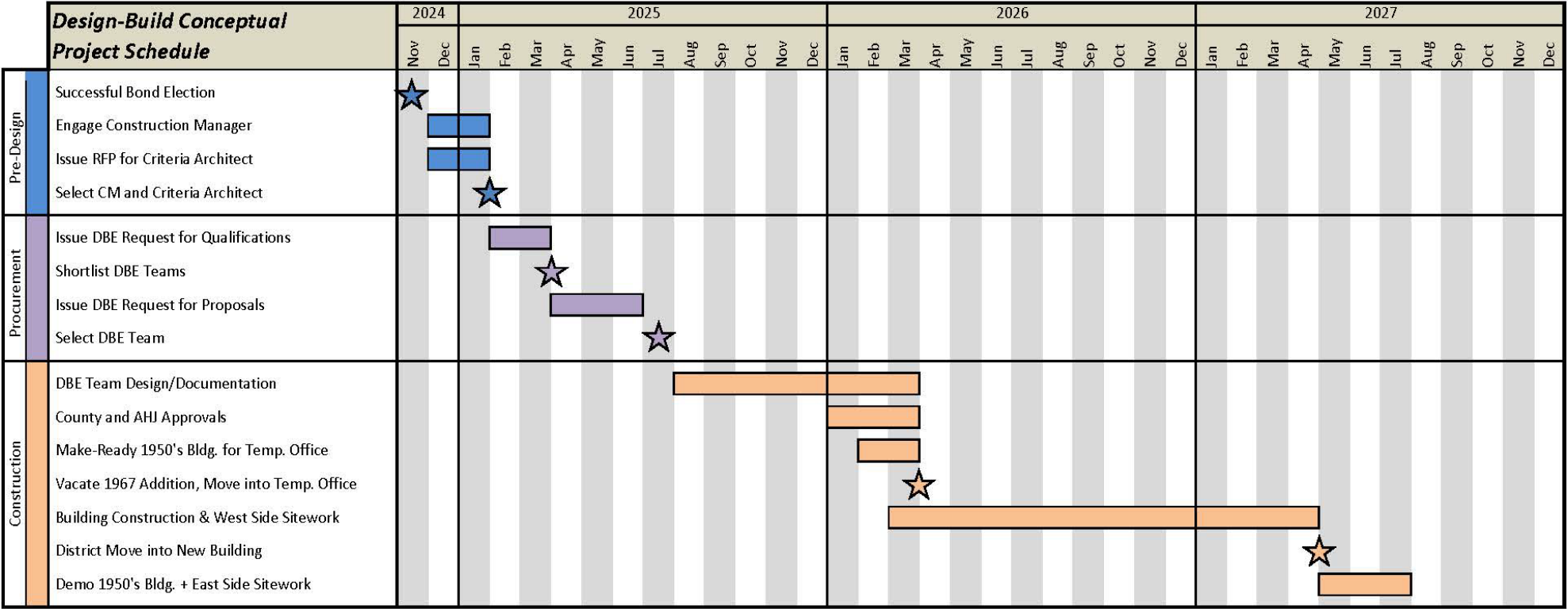


**Model A  
PRELIMINARY PLAN**

ISSUE 07.22.2023



## Cambria Community Healthcare District - Replacement Facility Model A - Standard Construction



Vanir Construction Management, Inc. 11/14/23

# Design-Build Conceptual Project Schedule